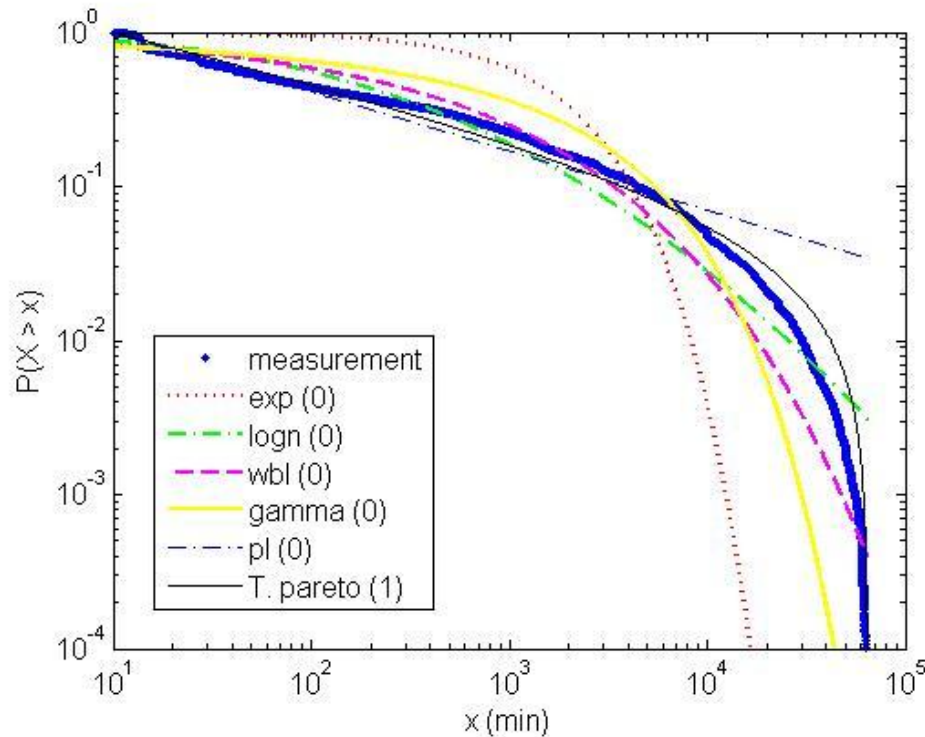




ICT: UCSD data set

- MLE fitting & Akaike test

§ Interval for MLE = [10 min, 99.9% quantile of all data]



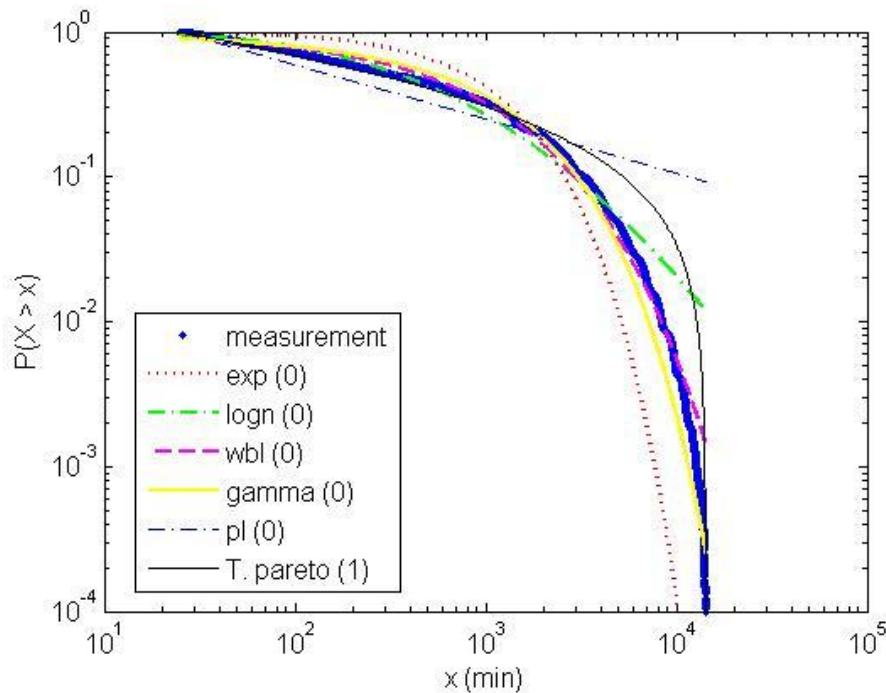
Distribution	AIC	AW
Exponential	315,970	0
Lognormal	265,500	0
Weibull	270,940	0
Gamma	276,640	0
Power law	255,290	0
Truncated Pareto	253,550	1



ICT: Dartmouth data set

- MLE fitting & Akaike test

§ Interval for MLE = [25 min, 99.9% quantile of 1 month data]



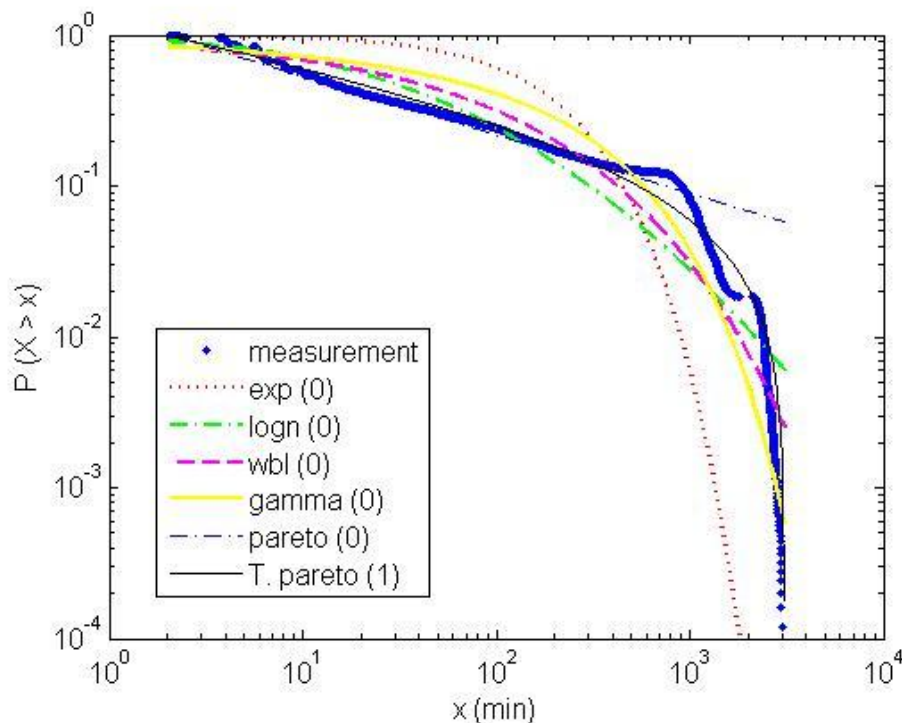
Distribution	AIC	AW
Exponential	27,349,688	0
Lognormal	26,608,392	0
Weibull	26,786,551	0
Gamma	26,893,923	0
Power law	26,878,457	0
Truncated Pareto	26,288,007	1



ICT: Infocom 2005 data set

- MLE fitting & Akaike test

§ Interval for MLE = [2 min, 99.9 % quantile of all the data]



Distribution	AIC	AW
Exponential	313,450	0
Lognormal	266,290	0
Weibull	274,680	0
Gamma	281,111	0
Power law	260,640	0
Truncated Pareto	256,160	1